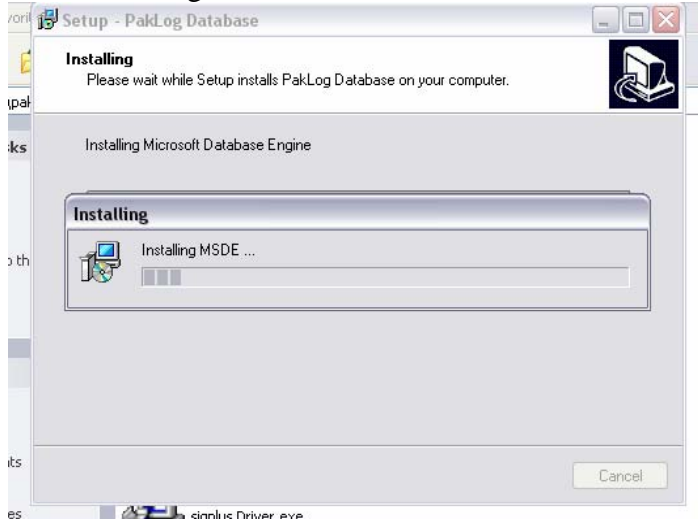


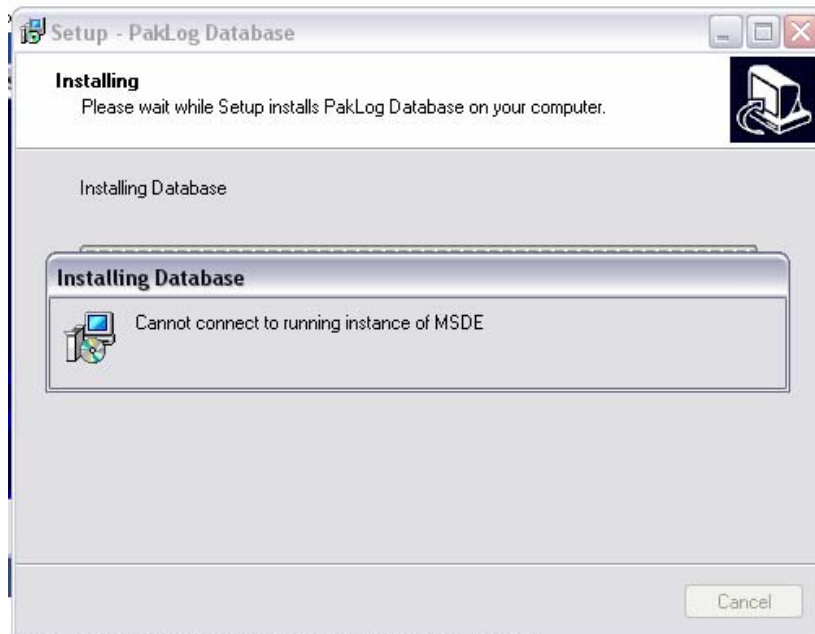
Instruction on installing PakLog on Windows XP Pro with SP2

Start the PakLog Database Install process.

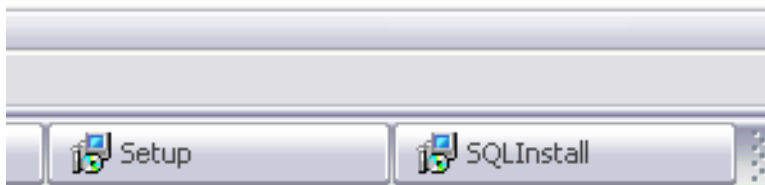
After installing MSDE



you will get Connecting window. Like the one below. Shortly after you will get a message as the one below. If you receive this message then

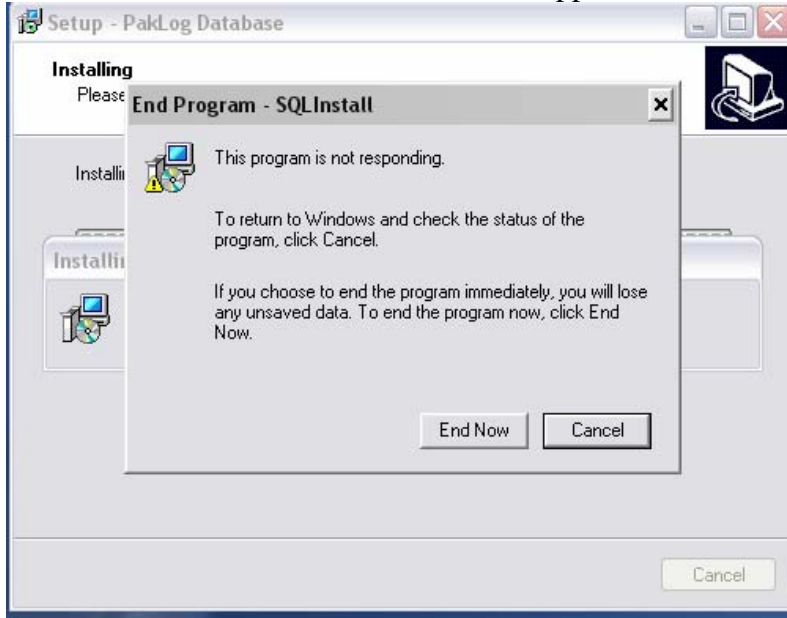


Terminate this process by Right clicking on the SQL Install Taskbar icon on the bottom of the screen where the Start button is.



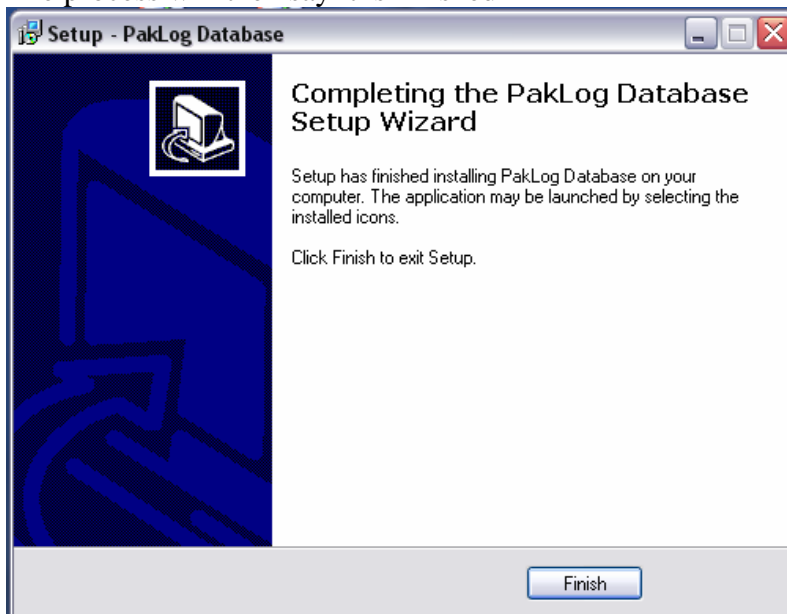
Then Click Close

Another window Like the one below will appear



Click End Now.

The process will then say it is finished



You might see additional windows that request you send data to Microsoft. Click Don't Send

Now Download and Run the sql2kdesksp3.exe file from the PakLog Support Web site. At <http://paklog.excercio.com/support.htm> This file will unpack more install files in the following directory

C:\sql2ksp3

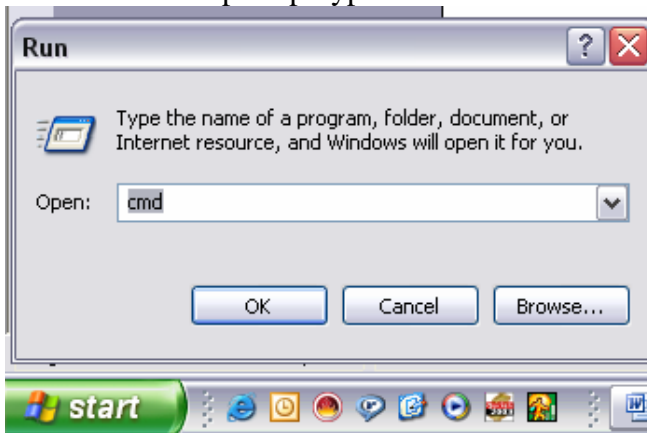
Once completed.

Turn off all firewall software temporarily. This includes the Windows Firewall if it is on.

Click Start

Click Run

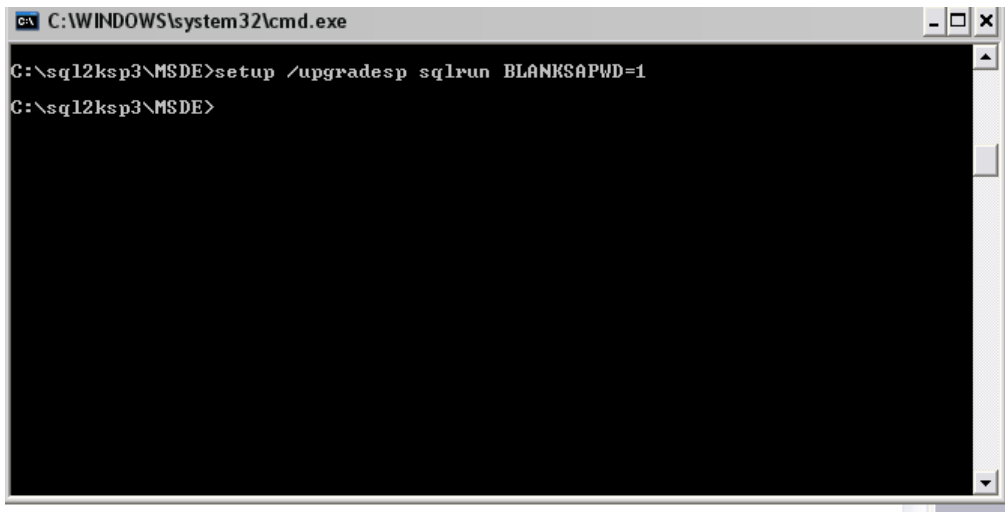
In the command prompt type “CMD” click OK



The Following Dos Windows should open.

Type “cd c:\sql2ksp3\msde” and hit enter

You should see the following prompt.



Enter “setup /upgradesp sqlrun BLANKSAPWD=1” this has to be exact in the cap letters where shown then hit enter

A new installation process will start let it continue until the window goes away and you see the Dos Command window again.

This process takes a considerable amount of time. Please do not stop it. It May take up to 15 Mins in some systems. The screen may show 0 secs but it is still running.

Close all windows and reboot the computer. Once the Computer loads back up make sure that SQL Server is running by looking in the system tray for a Icon of computer with a Green Arrow pointing right.



Make sure that Your firewall is still off.

Click Start,
Click All Programs,
Click PakLog,
Click Database,
Click Install Database

PakLog will try to Install the Db again. This time you should see a successful DB Install Message

Now you can install the PakLog Client Application Step 2.

Once installed you can start your firewall back up. Now you should not have any further problems.

If you still have problems please contact technical support at 1 800 619 1622 or support@excercio.com